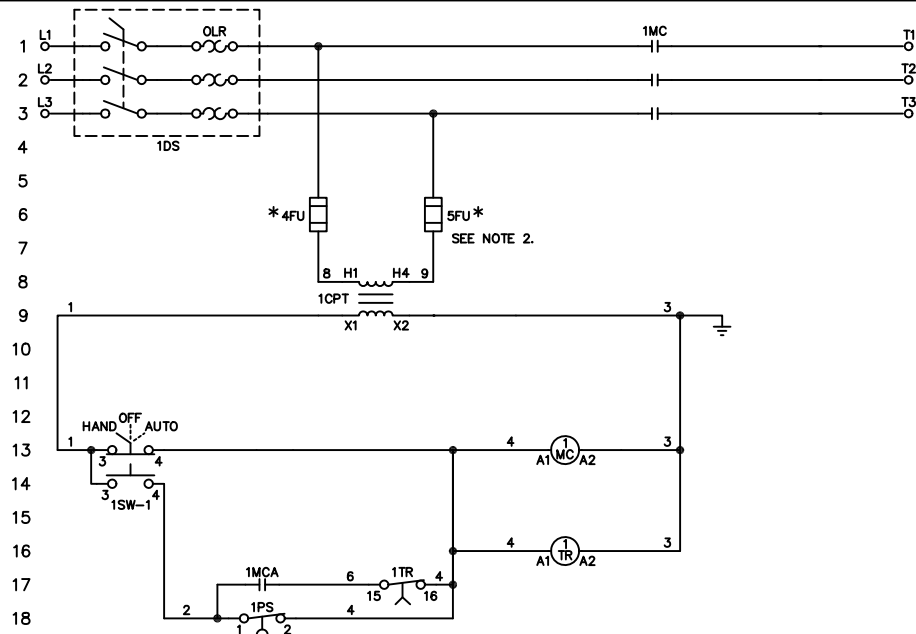


COMPONENTS FUNCTION LOCATION CONTACTS

| | | | |
|------|----------------------------|-------|-------|
| 1TR | RUN PERIOD TIMER | 16 | 17 |
| 1MC | MOTOR CONTACTOR | 13 | 1,2,3 |
| 1CPT | CONTROL PWR. TRANSFORMER | 8 | |
| 1DS | MOTOR PROTECTOR | 1,2,3 | |
| 4FU | CONTROL FUSE | 6 | |
| 5FU | CONTROL FUSE | 6 | |
| 1PS | PRESSURE SWITCH | 18 | |
| 1SW | HAND/OFF/AUTO SELECTOR SW. | 13 | |




NOTES FOR FIELD WIRING:

1) USE COPPER WIRING ONLY EXCEPT AT TERMINALS MARKED CU-AL,

2) TO REDUCE THE RISK OF FIRE, REPLACE WITH SAME TYPE AND RATING AS FUSE ORIGINALLY INSTALLED.

*** CONTROL FUSE SIZING TO BE AS FOLLOWS:**

| VA RATING | 200-208 VAC | 220-240 VAC | 380-415 VAC | 440-480 VAC | 550-600 VAC |
|-----------|-------------|-------------|-------------|-------------|-------------|
| 75 VA | 1.8 AMP | 1.5 AMP | 0.8 AMP | 0.8 AMP | 0.6 AMP |
| 150 VA | 3.5 AMP | 3.0 AMP | 1.8 AMP | 1.5 AMP | 1.25 AMP |

| | | | |
|--|------|--------|--|
| DRAWN | SR | 3-1-95 |  METRON, INC. DENVER, CO. |
| CHECK | x.s. | 3-1-95 | |
| APPD | RL | 3-1-95 | |
| SCHEMATIC, MODEL M15A, THREE PHASE WITH MOTOR PROTECTOR SWITCH JOCKEY PUMP CONTROLLER, W/XFMR. | | | CS32269D SCALE N.T.S. SHEET 1 OF 1 |