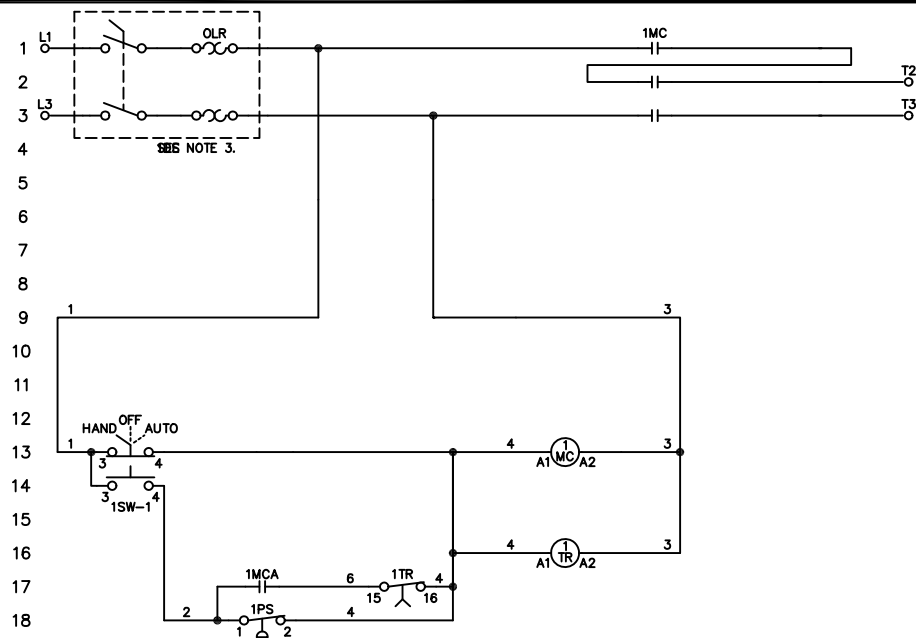


COMPONENTS	FUNCTION	LOCATION	CONTACTS
------------	----------	----------	----------

1TR	RUN PERIOD TIMER	16	17
1MC	MOTOR CONTACTOR	13	1,2,3
1DS	MOTOR PROTECTOR	1,2,3	
1PS	PRESSURE SWITCH	18	
1SW	HAND/OFF/AUTO SELECTOR SW.	13	



**NOTES FOR FIELD WIRING:**

1) USE COPPER WIRING ONLY EXCEPT AT TERMINALS MARKED CU-AL.

2) TO REDUCE THE RISK OF FIRE, REPLACE WITH SAME TYPE AND RATING AS FUSE ORIGINALLY INSTALLED.

3) 3FU NOT SUPPLIED ON 115V 1 PHASE UNITS.

DRAWN	SR	3-1-95
CHECK	x.d.	3-1-95
APPD	M.	3-1-95



**METRON, INC.**  
DENVER, CO.

SCHEMATIC, MODEL M15A, SINGLE PHASE WITH MOTOR PROTECTOR SWITCH JOCKEY PUMP CONTROLLER, W/O XFMR.

CS32271D

SCALE N.T.S. SHEET 1 OF 1