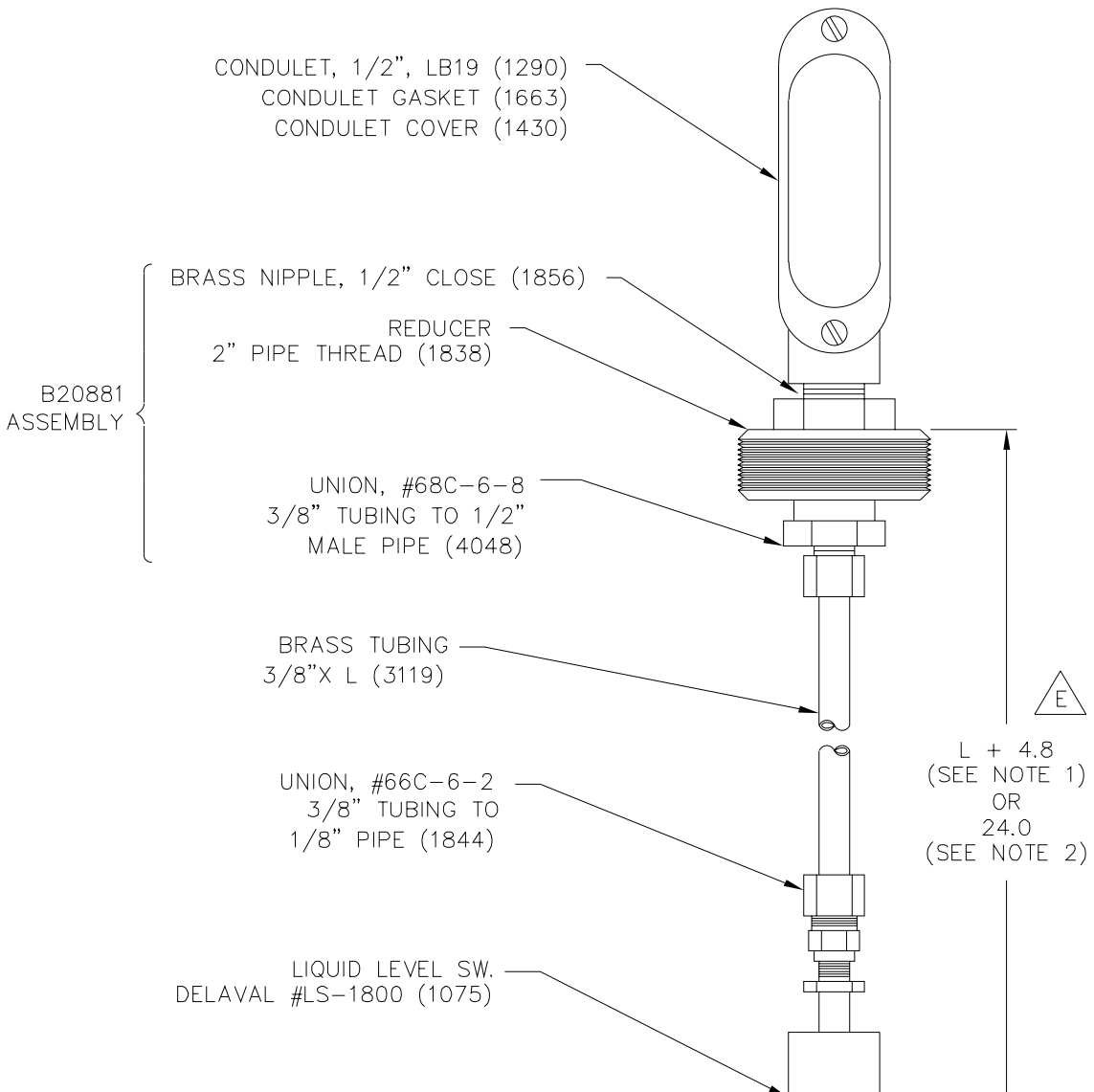



REVISIONS	SYM	DESCRIPTION	DATE	APPROVED
	E	MOD. NOTES & DIM ECO 2995	8-19-97	JSW <i>J.S.</i>



NOTES:

1. AA10519-1 REFERS TO DOC. 348 & 349 TO DETERMINE LENGTH PLUS 4.8". THIS SWITCH CLOSSES ON FALLING LIQUID LEVEL.
2. AA10519-2 REFERS TO LENGTH OF ASSEMBLY WHICH SHOULD BE A TOTAL OF 24.0" WHERE DIM IS SHOWN. THIS SWITCH CLOSSES ON RISING LIQUID LEVEL.

TOLERANCES ARE: .X ± .030 .XX ± .015 .XXX ± .005 ANGLES ± 0° 30' REMOVE BURRS & SHARP CORNERS	DRAWN J.V. (REDWN) 9-24-96	 METRON, INC. DENVER, CO
	CHECK JSW 10-8-96	
	APPD J.S. 10-14-96	
ASSEMBLY, LIQUID LEVEL SWITCH ENGINE FIRE PUMP CONTROLLER		AA10519E
SCALE N.T.S.		SHEET 1 OF 1